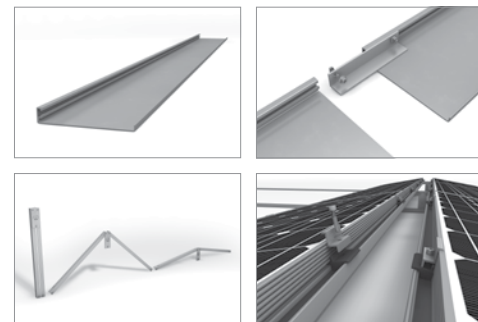


# NEW!

- For roofs with low ballast potential
- High degree of efficiency due to East-West-Orientation
- With the new K2 LevelRail
- Slight, two-sided 10° elevation
- High flexibility - for all types of modules
- Reduced assembly time due to pre-mounted components
- Extremely cost effective



K2 SYSTEMS  
**EAST-WEST LOW BALLAST  
ELEVATION SYSTEM**

# Mounting systems for solar technology



K2 Systems GmbH  
Riedwiesenstraße 13 - 17  
71229 Leonberg  
Germany  
Phone +49 (0) 7152 - 3560 - 0  
Fax +49 (0) 7152 - 3560 - 179  
info@k2-systems.de  
www.k2-systems.de

K2 Systems SARL - Agence FRANCE NORD  
4, rue des Hérons  
67960 Entzheim  
France  
Tel. +33 (0) 3 88 21 66 02  
Fax +33 (0) 3 88 21 66 03  
info@fr.k2-systems.eu  
www.k2-systems.de

K2 Systems s.r.l.  
Via Madonna dello Schioppo 67  
Secondo Piano Int. 17 - 19  
47521 Cesena FC  
Italy  
Tel. +39 0547 63 20 80  
Fax +39 0547 63 50 22  
info@it.k2-systems.eu  
www.k2-systems.de

K2 Systems SARL - Agence FRANCE SUD  
19 Avenue du Pré de Challes  
Parc des Glaisins  
74940 Annecy le Vieux  
France  
Tel. +33 (0) 4 50 51 22 53  
Fax +33 (0) 4 50 51 16 41  
info@fr.k2-systems.eu  
www.k2-systems.de

